

# KANSAS STATE USE

PRODUCTS AND SERVICES CATALOG

## 2024-2025



**KSSTATEUSE.ORG**

**SUPPORT THESE FINE BUSINESSES**

CPRF • BTCO • KETCH • GOODWILL INDUSTRIES OF KANSAS, INC.  
ENVISION • ENVISION PRINT • ENVISION INTERFACE  
ENVISION BVI WORKFORCE INNOVATION CENTER  
TARC • COTTONWOOD

## **General information**

This catalog is published in compliance with K.S.A. 75-3317 through 75-3322, “The Kansas Use Law”. The Kansas Director of Purchases has found the items in this catalog to be consistent with “The Kansas Use Law” and has therefore designated them for mandatory purchase. The intent of “The Kansas Use Law” is to help provide employment for Kansans who are blind or severely disabled. Purchase of products and services from these exceptional Kansans helps them be a productive force contributing to the economy of our State.

## **Benefits of the Program**

- Yields meaningful employment and training
- Compliments and encourages efforts to deinstitutionalize people who have disabilities
- Advocates self-sufficiency for those with disabilities
- Reduces cost of service care for people with disabilities
- Encourages community involvement and support of people who have disabilities
- Supports efforts for a good business approach to spending vocational rehabilitation dollars
- Increases tax base
- Decreases tax requirements
- Stimulates growth of Kansas local economy
- Ensures continuity in the supply of needed services and products to customers
- Provides opportunity for State agencies to contract for services at a lower cost than in-house services
- Promotes productivity in vocational rehabilitation centers

## **A summary of Kansas law about purchasing**

### **Summary of K.S.A. 75-3321**

The Director of Purchases and any person or officer authorized to purchase materials and supplies for any State agency or Unified School District operating in Kansas, or to purchase services for any agency within Kansas State government, shall purchase, from the catalog, “Products and Services Manufactured and Offered By Blind and Severely Disabled Kansans”, at any time when the listings in that catalog will meet the needs of the agency or school district.

### **Summary of K.S.A. 75-3322**

Whenever the qualified vendors represented in this catalog are unable to supply the products or services needed, or are unable to meet delivery requirements on any purchase order or requisition, a written waiver request shall immediately be forwarded to the Director of Purchases by the state agency procurement officer or purchasing officer of the Unified School District. If approved by the Director of Purchases, such waivers shall relieve and exempt the state or Unified School District from the purchasing requirements set forth in the relevant Kansas laws (K.S.A. 75-3317 and 75-3322). The waiver granted shall apply only to the case of the specific purchase order, request or requisition.

### **Request for State Use Program waiver**

The Kansas State Use Program is governed by statutes (K.S.A. 75-3317 through 75-3322) which include some provisions for waivers. To find out more, please visit the following website.

Waiver Request Form: [www.da.ks.gov/purch/StateUseWaiverRequestForm.doc](http://www.da.ks.gov/purch/StateUseWaiverRequestForm.doc)

June 7<sup>th</sup>, 2023

The office of Procurement and Contracts / Director of Purchases, Todd Herman would like to formally recognize the value and efficiency provided by the state-use program. The combined efforts of our state use vendors and agencies have created an exemplary program. The State of Kansas, Political Subdivisions, and Local Government can easily procure high-value commodities, while supporting companies that help provide employment for Kansans who are blind or have other severe disabilities.

In addition to mandatory source products, many state-use vendors provide numerous non-mandatory products and services which may fit the need of State Agencies and Political Subdivisions. Using State-Use Vendors can expedite the procurement process as they do not require additional competition or approval from the Office of Procurement and Contracts.

As of July 1st, 2023, the following Agencies are the authorized State-Use Vendors (this list will be updated annually):

- BTCO
- CPRF
- Envision
- Goodwill
- Ketch
- TARC
- Cottonwood Industries

It is our hope that you will consider using the state-use vendors for products beyond the mandatory requirements.

Thank you.



Director of Purchases  
Officer of Procurement and Contracts  
State of Kansas, Department of Administration

# KANSAS STATE USE CATALOG

## ALPHABETICAL LISTINGS

Air Filters	21-23	Hygiene Products (Soap, Sanitizer & TidyGirl)	35, 37
Bags, Compostable	31	Indexing & Data Entry	6-7
Bags, Environmental	30-31	Inmate Apparel	18
Bags, Insect Repellent Trash	32	Janitorial Services	10
Bags, Medical / Isolation	33	Landscaping Maintenance	10
Bags, Plastic Trash	27-32	Large-format Scanning & Printing	6-7
Bags, Recycled	30	Mailing Services	6-7, 10
Bags, Seal Closure	34	Markers: Dry Erase, Highlighter, Permanent	38
Bags, Shredder	32	Medical Scrubs, Lab Coats	12-13
Body Fluid Clean-Up Kits	34	Packaging	10
Boxing (Packaging) Service	10	Pens, Ballpoint	40
Bulk Mailing Processing	6-7, 10	Pens, Cushion-Grip	39
Business Cards	41	Pens, Gel	39
Certifications and Standards	9, 43	Pens, Rollerball	40
Collating Services	10	Porter Services	8
Computer Recycling	18	Printing Services	41
Contact Center Services	43	Records Conversion & Retrieval	6-7
Data Research	6-7	Records Management	6-7
Digital Accessibility Services	42	Safety Apparel	14-17
Digital Document Imaging	6-7	Scanning	6-7
Document Destruction	10	Traffic Safety Flags	19
Floor Cleaning	8, 10	Wiping Materials	19
Hand Trucks	36	Workforce Training	9,42-43

### LIVE LINK INSTRUCTIONS

Each of the vendors pages within this catalog are live linked back to their respective website. If you are connected to the internet while going through the catalog and desire more information about the company, contact information or ordering information, simply click the page as you would a link on any web page and you'll be directed to that specific vendor's site. (Some of the vendor pages have more than one link to multiple websites.)

As in past years, you may place orders by contacting the vendor directly, using their individual sites if they have online ordering capabilities, or you can refer back to the Kansas State Use website ([www.ksstateuse.org](http://www.ksstateuse.org)).

If any additional information is needed about products or services, be sure to contact the vendor directly.

# INDEX OF CATALOG PARTICIPATING FACILITIES

<b>Business Technology Career Opportunities, Inc. (BTCO)</b> 5111 E. 21st St. North, Wichita, Kansas 67208 (316) 651-5250 / <a href="http://www.btcoinc.com">www.btcoinc.com</a> FEIN No. 48-1000480	<b>Page 6-7</b>
<b>CPRF Facilities Services</b> 5111 E. 21st St. North, Wichita, Kansas 67208 (316) 688-1888 / <a href="http://www.cprf.org">www.cprf.org</a> FEIN No. 23-7314938	<b>Page 8-9</b>
<b>Envision</b> 2301 S. Water, Wichita, Kansas 67213 (800) 685-7959 / (316) 267-2244 / FAX (316) 267-0559 <a href="http://www.envisionus.com">www.envisionus.com</a> FEIN No. 48-0543705	<b>Page 24-40</b>
<b>Envision Print</b> 2301 S. Water, Wichita, Kansas 67213 (877) 229-8466 / FAX (316) 425-7169 <a href="http://www.envisionprintservices.com">www.envisionprintservices.com</a> FEIN No. 48-0543705	<b>Page 41</b>
<b>Envision BVI Workforce Innovation Center</b> 610 N. Main St, Wichita, Kansas 67203 (316) 440-1514 / <a href="http://www.workforceforall.com">www.workforceforall.com</a> FEIN No. 26-1392721	<b>Page 42</b>
<b>Envision Interface</b> 610 N. Main St., Wichita, Kansas 67203 (316) 440-1513 / <a href="http://www.envisionus.com">www.envisionus.com</a> FEIN No. 84-2126403	<b>Page 43</b>
<b>Goodwill Industries of Kansas, Inc.</b> 3351 N. Webb Road, Wichita, Kansas 67226 (316) 744-9291 / FAX (316) 744-1428 / <a href="http://www.goodwillks.org">www.goodwillks.org</a> FEIN No. 48-0673284	<b>Page 11-19</b>
<b>KETCH</b> 1006 E. Waterman, Wichita, Kansas 67211 (316) 383-8770 / Fax (316) 383-8779 / <a href="http://www.KETCH.org">www.KETCH.org</a> FEIN No. 48-0683499	<b>Page 20-23</b>
<b>TARC Industries</b> 1800 SW 42nd St., Topeka, Kansas 66609 (785) 266-2323 / Fax (785) 266-2385 / <a href="http://www.tarcindustries.com">www.tarcindustries.com</a> FEIN No. 48-6086732	<b>Page 10</b>

## **NOT SHOWN IN CATALOG**

### **Cottonwood Industries    Optional Use**

2801 W. 31st Street, Lawrence KS. 66047  
(855) 842-0550 / (785) 842-0550 / Fax (785) 840-1506  
[www.cottonwoodindustries.com](http://www.cottonwoodindustries.com) • FEIN No. 48-0780431

Bulk mailing Services, Commercial Sewing,  
Manufacturing / Assembly / Packaging,  
Warehousing



*"A World-class organization that sets the bar for all others to follow. Not only did it hit every mark ever promised, but continuously improved..."*

— US Air Force Pentagon

# Your Vision. Our Solution.



## Conversion

Capture  
Standard to Large Format  
Classification  
Secure & Retention Friendly  
Convert your records and get instant access to all the data you need - right at your fingertips.



## Mailroom

In & Out Bound  
Digital Deliveries  
Data Capture  
Fullfilment  
Make the most of your mail and every bit of data that's associated with it.



## Research

Web Research  
Enhanced Indexing  
Data Mining  
Third-party Integration  
In a world where Data is King, harness the information already available.

• Kansas State Use vendor • Kansas Certified Business •

• SourceAmerica AbilityOne member • affiliate support business to the CPRF of Kansas mission •

• *Customer specifications lead each project — from setup to final delivery*

• *Vetted, expert employees who are members of a full-time, stable workforce*

• *Extensive project management experience with proven workflow tracking systems*

• *Multi-location project success*

• *100% shipping & receiving accountability*

• *Federally trusted quality & security standards*

**ARE YOU READY TO START USING YOUR DATA  
MORE POWERFULLY?**

**LET US HELP YOU GET STARTED.**



**(316) 651-5250    info@BTCOinc.com**



# Kansas Use Law Sample Pricing

Fiscal 2025

(July 1, 2024 through June 30, 2025)

## Standard Size/Format Digital Scanning

- Pricing is for each side of a standard letter, legal or ledger size page or image
- Output is for black-and-white, PDF or TIFF, Group 4 format, 200dpi
- Grayscale, color and other formats are available and will be estimated based on requirements

Service	Rate	Price
Document Preparation	Hourly	\$38.08
Scan	Pages <50,000	\$0.08
	Pages 50,000 – 100,000	\$0.07
	Pages > 100,000	\$0.06
Index	Per field	\$0.05
	Per character	\$0.02
OCR: automated choice of searchable PDF, TXT, metadata	Per image	\$0.003
Redaction	Custom	Quoted
Labor	Hourly	\$38.08

## Microfilm & Microfiche

Microfilm rolls/cartridges conversion to digital is priced similarly but is dependent upon document separation. Microfiche and/or aperture cards are quoted separately.

## Oversized Scan and Print Services

Any unrolling/unfolding will incur a prep surcharge of \$38.08/hour in addition to the piece rate. Customers will only be charged 2/3 of hours clocked on the project for this prep fee. The remaining 1/3 is the time spent while actually scanning and thus not charged to the customer.

- Pricing is for each side of a page or image that is not standard size
- Output is for black-and-white, PDF or TIFF, 200dpi
- Grayscale, color and other formats are available and will be estimated based on requirements

ANSI Size	ARCH Size	Dimension Range		Price		
				Scan	Print	Copy
C	C/3	17x22	18x24	\$3.00	\$3.50	\$6.00
D	D/4	22x34	24x36	\$3.00	\$4.50	\$7.00
E	E/6	34x44	36x48	\$3.00	\$5.50	\$8.00
Custom	Custom	45 wide	-	\$3.00	Quoted	Quoted

## Mailroom Services

Customized estimates based on specific customer requirements. Services include, but are not limited to:

- Receiving incoming physical mail, sorting, scanning, indexing, and electronic delivery per customer specifications
- Fulfillment of out bound mail functions based on specific customer requirements for delivery through US Postal Services and commercial carriers.

Service	Rate	Price
Site Supervisor	Hourly	\$59.02
Labor	Hourly	\$36.50

*BTCO reviews samples of each project's actual documents to build an appropriate project scope and estimate. Complex, high-volume projects that require the processing of sample records may incur a demonstration fee – negotiated in advance with each customer. Each estimate is built to the customer's specifications and, as a result, may vary from the models above.*

### BTCO, Inc

(316) 651-5250

Wichita, Kansas 67208

Richard Stinnett, President: [RichS@BTCOinc.com](mailto:RichS@BTCOinc.com)

[www.BTCOinc.com](http://www.BTCOinc.com)

# cprf FACILITIES SERVICES

Providing quality janitorial services using commercial-grade cleaning products and equipment. All employees in CPRF's integrated workforce receive competitive market wages and fringe benefits.



## PORTER SERVICES:

- Ideal for businesses who prefer to have cleaning staff on-site during business hours.
- Ensures that high traffic and heavy-use areas (conference rooms, bathrooms, etc.) remain clean and stocked throughout the day.
- Stocks and cleans bathrooms as needed, removes trash, and more to maintain a tidy atmosphere during the day.

## CAPABILITIES INCLUDE:

- Floor cleaning (CVT, carpet, tile, rubber)
- Trash removal
- Dusting
- Window cleaning
- Porter/Matron services
- Other routine duties

*\*All services are available both during and after office hours.*

## CONTACT US

Patrick Jonas ■ CPRF President & CEO  
(316) 652-1539 ■ patj@cprf.org  
5111 E. 21<sup>st</sup> St. N. ■ Wichita, KS 67208





Non-Mandatory Use Law Offering

# School of Adaptive Computer Training

The SACT provides computer classes for adults and high school students with all types of disabilities, including learning disabilities, ADHD, autism, and mental health conditions. All classes are available in-person in our Wichita classroom **or** online for students anywhere in the state of Kansas.



## Curriculum:

### >> Microsoft Introductory Courses

- Word
- Excel
- Outlook
- PowerPoint

### >> Microsoft Office Specialist Certifications

- Word
- Excel

### >> Employment Soft Skills & Key Technology Skills

- Customer Service Program
- Computing Essentials for Employment
- Core Computer Skills Assessment
- Living & Working Online
- Online Safety

## Why Enroll:

### >> Accessible Classroom

- Assistive technology — screen readers, magnifiers, and speech recognition
- Wheelchair-friendly adjustable desks
- Small class size and remote screen access for high quality one-on-one instruction

### >> Increase Digital Literacy

### >> Develop Marketable Job Skills

Visit [cprf.org/sact](http://cprf.org/sact)  
to view our current  
class schedule

(under "SACT RESOURCES & FORMS")

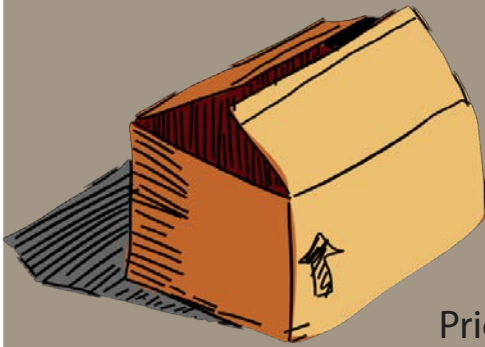
*All classes are led by a Microsoft Office Specialist Master Instructor with over 15 years of experience teaching students with disabilities.*

## CONTACT US

Aaron McAnarney ▪ SACT Director  
(316) 652-1527 ▪ [aaronm@cprf.org](mailto:aaronm@cprf.org)  
5111 E. 21<sup>st</sup> St. N. ▪ Wichita, KS 67208

## Document Destruction

- NAID Certified
- Secure pick-up for office site, plant based shredding
- Monitored alarm system and video surveillance
- Flexible pick-up schedules
- Certificate of Destruction with invoicing
- Custom pricing based on quantity & contract



## Packaging & Distribution

- Component assembly and packaging
- Bagging and sealing small parts
- Shrink-wrap, label, bag, heat seal
- Collate, insert, fold and seal
- Prices depend on piece count and job specifics
- Local pick up and delivery

## Mailing Services

- Bulk and First Class mail services
- Mail preparation: collating, inserting, folding
- Tabbing, metering, labeling,
- Inkjet addressing and postal permit indicia
- Customized price quotes
- Local pick up and delivery



## Janitorial Services

- Daily light cleaning services
- Landscaping maintenance
- Prices depend on size of building, supplies, and number of people needed
- Customized contracts



**EDGAR JAMES**  
A P P A R E L

**Goodwill**  
Industries of Kansas 



# Quality with a Purpose

**T**o further its mission, Goodwill Industries of Kansas, Inc. established Edgar James Apparel, an ISO-certified line of medical, safety, food service and retail apparel. Inspired by Goodwill's founder Rev. Edgar James Helms, the mission of Edgar James Apparel ensures all people have the opportunity to develop job skills and lead independent and productive lives. We are proud to employ people with various disabilities and employment barriers to complete cut-and-sew orders, producing quality apparel for various industries.

When you shop Edgar James, 90 cents of every dollar spent helps Goodwill educate and employ people with disabilities or other employment barriers. Our commitment to quality, service and opportunity goes in to every stitch of our fine apparel, designed to serve you in your daily work. Quality with a Purpose — that's the EJ Way!

## **CUSTOMIZATION**

All products can be customized. From changing colors and fabrics to adding features and a logo, we can complete any project to your specifications.

## **DEDICATED TO QUALITY**

Our manufacturing facility has been 9001-2015 ISO certified since 2007, which requires the highest level of production excellence. Each order is thoroughly inspected to ensure on-time delivery, defect free products and full customer satisfaction.

## **ORDERING OPTIONS**

**EMAIL** gwsales@goodwillks.org  
**PHONE** 316-744-9291, Ext. 105 or Ext. 111  
**ONLINE** ksstateuse.org  
**MAIL** 3351 N. Webb Rd., Wichita, KS 67226

## **CUSTOMER SUPPORT**

**INVOICES** Net 30-day payment terms  
**PAYMENT METHODS** MasterCard, Visa, Check and Purchase Order  
**FREIGHT** F.O.B. to destination  
**RETURNS** A 10% restocking fee is charged for any returned, unopened, undamaged stock items. Returns must be authorized in advance. Freight charges for returns are the customer's responsibility. No returns will be authorized after 30 days, or on special orders.



# Medical Apparel

Medical scrubs and lab coats are designed for all day comfort and versatility. Scrubs come in three distinct styles to meet the needs of any medical professional. Make a statement with branded apparel.

## EJ Signature Scrubs

SET • A420  
TOP • A421  
PANTS • A422



<b>SET</b>	
XS-XL .....	\$26.40
2XL-4XL .....	\$28.35
<b>TOP</b>	
XS-XL .....	\$15.30
2XL-4XL .....	\$16.45
<b>PANTS</b>	
XS-XL .....	\$15.75
2XL-4XL .....	\$16.75

65% polyester, 35% sturdy cotton blend

### EJ Signature Top

- Banded V-neckline
- Set-in sleeves for all day comfort
- Four pockets: single chest patch pocket with accent color (includes pen slot), one front cell phone pocket, two lower front pockets
- Two side splits with accent color
- Longer length for added coverage

### EJ Signature Pants

- Accent-colored large drawstring
- Two comfortable elastic hip bands
- Two back pockets
- Right leg cargo pocket with pen sleeve
- Straight leg with double stitching
- Two front slash pockets
- Bottom split legs with accent color



## Classic Scrubs

SET • A430  
TOP • A431  
PANTS • A432



<b>SET</b>	
XS-XL .....	\$21.40
2XL-4XL .....	\$23.00
<b>TOP</b>	
XS-XL .....	\$12.45
2XL-4XL .....	\$13.35
<b>PANTS</b>	
XS-XL .....	\$12.70
2XL-4XL .....	\$13.65

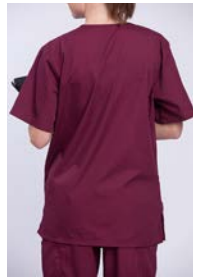
65% polyester, 35% sturdy cotton blend

### Classic Top

- Banded V-neckline
- Set-in sleeves
- Single chest patch pocket with pen slot
- Two lower front pockets
- Two side splits
- Longer length for added coverage

### Classic Pants

- Large drawstring
- Comfortable elastic waist band
- Black right pocket
- Right leg cargo pocket with pen sleeve
- Straight leg with double stitched bottom split



## Medical Lab Coat

LC2014



<b>LAB COAT</b>	
S-XL .....	\$33.55
2XL .....	\$34.65
3XL .....	\$36.95
4XL .....	\$39.20
5XL .....	\$41.45

- White 65% polyester, 35% cotton, soft blend fabric
- Three button front, 40 in. length
- Two spacious lower pockets
- Upper left crest pocket



## Essential Scrubs

SET • A410  
TOP • A411  
PANTS • A412



<b>SET</b>	
XS-XL .....	\$18.95
2XL-4XL .....	\$20.75
<b>TOP</b>	
XS-XL .....	\$11.10
2XL-4XL .....	\$12.00
<b>PANTS</b>	
XS-XL .....	\$11.25
2XL-4XL .....	\$12.20

65% polyester, 35% sturdy cotton blend

### Essential Top

- Banded V-neckline
- Set-in sleeves
- Two lower front pockets
- Longer length for added coverage

### Essential Pants

- Large drawstring
- Back right pocket
- Straight leg





Custom-ordered medical scrubs are produced on demand with a production time of 7 - 21 days after the order is placed. The production time does not include shipping time or time to pick up.



## Medical Apparel Size Chart

SIZE	TOP CHEST/ BUST	TOP LENGTH	WAIST	HIPS	INSEAM
XS	34	28	23-27	31-34	28
S	38	28	28-30	36-38	28
M	42	30	31-34	39-41	30
L	46	30	35-38	42-44	30
XL	50	30	39-42	45-48	30
2XL	54	30	43-46	49-52	30
3XL	58	32	47-50	53-56	30
4XL	62	32	51-54	57-60	30
5XL	66	32	55-56	61-64	30

Alternate inseam available upon request: Regular - 30" • Petite - 28" • Tall - 32"

## Stock Colors Additional colors available upon request.

BURGUNDY



LIGHT BLUE



ROYAL BLUE



Colors above show a color standard and are subject to variation.

Contact us to learn about adding a logo or other custom text.

## College Scrubs

SET • A425  
TOP • A426  
PANTS • A427



**SET**  
XS-XL .....\$26.40  
2XL-4XL .....\$28.35  
**TOP**  
XS-XL .....\$15.30  
2XL-4XL .....\$16.45  
**PANTS**  
XS-XL .....\$15.75  
2XL-4XL .....\$16.75

College Scrubs are the same as our EJ Signature Scrubs but include accent colors to represent the college. Printed logo can be implemented to finalize the garment.

65% polyester, 35% sturdy cotton blend

### College Scrub Top

- Banded V-neckline
- Set-in sleeves for all day comfort
- Four pockets: single chest patch pocket with contrasting team color (includes pen slot), one front cell phone pocket, two lower front pockets
- Two side splits
- Longer length for added coverage

### College Scrub Pants

- Contrasting team color large drawstring
- Two comfortable elastic hip bands
- Two back pockets
- Right leg cargo pocket with pen sleeve
- Straight leg
- Two front slash pockets
- Bottom split legs with contrasting team color



### Add a logo!



# Safety Apparel

## KDOT Class III Professional Safety Vest

M938YR



**Order by the case only**  
**Qty: 25/case**

S-L..... \$35.25  
 XL..... \$36.55  
 2XL..... \$39.15  
 3XL..... \$42.15  
 4XL..... \$44.05  
 5XL..... \$46.05  
 Add \$1.65/size for larger sizes.

- Durable, high visibility orange front with yellow back, 3.5 oz (approx. weight)
- Soft neck binding
- 3M 4" contrasting comfort trim with two 1" segmented silver reflective tape
- Front zipper closure
- Inside pocket with velcro closure
- KDOT printed on back
- Meets ANSI/ISEA 107-2015, Type R, Class III standard
- Customization available

## KDOT Class III Professional Bridge Inspector Safety Vest

M937YR



S-L..... \$68.65  
 XL..... \$70.95  
 2XL..... \$73.30  
 3XL..... \$75.65  
 Add \$1.65/size for larger sizes.

- High visibility orange front with yellow back, 3.5 oz (approx. weight)
- Soft neck binding
- 3M 4" contrasting high visibility comfort trim with two 1" segmented silver reflective tape
- Front zipper closure
- Reinforced lanyard opening on back
- Double pocket on upper front left crest with outer pocket having three pen slots
- Expandable pocket with Velcro closure/flap on upper-right crest, created with 3M 4" contrasting hi vis comfort trim
- Two lower inside pockets with Velcro closure
- Inside lower front-right pocket on left with Velcro closure
- 3" silver/grey nylon mic tab upper-left crest, above pocket
- 22" wide x 13" high pocket on lower-rear with Velcro closure on each side
- Meets ANSI/ISEA 107-2015 Type R, Class III standard

## KDOT High-Visibility Safety Pants

M918R



**Order by the case only**  
**Qty: 25/case**

XShort..... \$23.55  
 Short..... \$25.80  
 Small fit..... \$25.80  
 Regular fit..... \$27.15  
 Long..... \$31.25  
 Large..... \$31.25  
 XL..... \$31.25  
 2XL..... \$33.55  
 3XL..... \$35.80  
 Add \$1.65/size for larger sizes.

- Durable high satin finish fabric, 3.5 oz (approx. weight)
- Velcro ankle closure
- Elastic waistband with drawstring
- 3M 4" contrasting high visibility comfort trim with two 1" segmented silver reflective tape
- Meets ANSI/ISEA 107-2015, Supplemental Class E standard
- Customization available

## Safety Pants Size Chart

SIZE	INSEAM	WAIST
XSHORT	26	32
SHORT	28	34
SMALL FIT	30	32
REGULAR FIT	32	34
LONG	36	34
LARGE	34	34
XL	34	36
2XL	34	38
3XL	34	40



## Class II Break-Away Safety Vest

M508Y



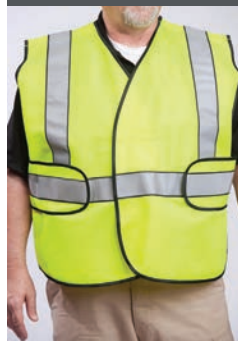
S-L..... \$25.15  
XL-3XL.....\$28.90  
Add \$1.65/size for larger sizes.

Vests can fit three sizes per category and can be adjusted to fit body sizes in that category.

- Durable high visibility 100% polyester tricot fabric, 3.5 oz (approx. weight)
- Yellow or orange
- Mesh or solid fabric
- 3M 4" contrasting high visibility trim with two 1" silver (or one 2" silver) reflective tape
- Adjustable panel belt system with velcro breakaway shoulders, front and belt
- Double duty, inside pocket
- Meets ANSI/ISEA 107-2015, Type R, Class II standard
- Customization available

## Professional Law Enforcement Vest

S708AY-HF



XS-S..... \$37.75  
M-XL.....\$39.70  
2XL-4XL.....\$41.70  
5XL-7XL.....\$43.75  
Add \$1.65/size for larger sizes.

Vests can fit three sizes per category and can be adjusted to fit body sizes in that category.

- Durable, high visibility yellow solid fabric, 4.5 oz/yd<sup>2</sup> (approx. weight)
- 5-point breakaway system
- 2" silver/black-edged reflective tape
- Adjustable belt closure with contrasting black trim
- KHP printed on back
- Meets ANSI/ISEA 107-2015, Type P, Class II standard

## Class II Economy Safety Vest

YELLOW • M108Y  
ORANGE • M108R



One size (S-2XL) ..... \$11.65  
Add \$1.65/size for larger sizes.

Vests can fit three sizes per category and can be adjusted to fit body sizes in that category.

- Durable high visibility vest
- Yellow or orange
- Mesh fabric
- Velcro adjustable sides (dual sizing), pull-over style; one size fits most
- 2" silver reflective tape
- Printing available on front and back
- Meets ANSI/ISEA 107-2015, Type R, Class II standard
- Customization available

## Class II Standard Safety Vest

S808Y



S-L..... \$14.15  
XL-2XL.....\$15.45  
3XL-4XL.....\$16.70  
Add \$1.65/size for larger sizes.

- Durable high visibility vest
- Yellow mesh fabric
- Standard vest style with 2" silver reflective tape
- Printing available on front and back
- Meets ANSI/ISEA 107-2015, Type R, Class II standard
- Customization available



## Class II Adjustable Safety Vest

M510Y



S-L.....\$23.90  
 XL-2XL..... \$25.10  
 3XL-4XL..... \$26.35  
 Add \$1.65/size for larger sizes.

- Durable high visibility vest, 3.5 oz (approx. weight)
- Yellow mesh fabric
- 2" reflective tape over contrasting strips
- Front zipper closure
- Adjustable velcro sides
- Two interior and one exterior pockets
- Printing available on front and back
- Meets ANSI/ISEA 107-2015, Type R, Class II standard
- Customization available

## Class II Chevron Hi-Vis Safety Vest

M819R



M-XL.....\$26.65  
 2XL-4XL..... \$27.80  
 5XL.....\$29.05  
 Add \$1.65/size for larger sizes.

- Durable high visibility vest
- Orange mesh fabric
- 2" contrasting high gloss tape across front and middle
- 3 chevrons on back
- Velcro front closure, adjustable side belts
- Meets ANSI/ISEA 107-2015 Type R, Class II standard

## Class III Long Sleeve Standard Mesh Safety Shirt

M943Y  
 M943R



One Size (S-5XL).....\$14.30  
 Add \$1.65/size for larger sizes.

- Durable high visibility shirt
- Yellow or orange mesh fabric
- 2" silver reflective tape
- Printing available on front and back
- Meets ANSI/ISEA 107-2015, Type R, Class III standard
- Customization available

## Class III Short Sleeve Standard Mesh Safety Shirt

M933Y  
 M933R



One Size (S-5XL)..... \$13.75  
 Add \$1.65/size for larger sizes.

- Durable high visibility shirt
- Yellow or orange mesh fabric
- 2" silver reflective tape
- Printing available on front and back
- Meets ANSI/ISEA 107-2015, Type R, Class III standard
- Customization available





## Class II Long Sleeve Standard Mesh Safety Shirt

M940Y  
M940R



One size (S-5XL) ..... \$13.25  
Add \$1.65/size for larger sizes.

- Durable high visibility shirt
- Yellow or orange mesh fabric
- Standard style with 2" silver reflective tape
- Printing available on front and back
- Meets ANSI/ISEA 107-2015, Type R, Class II standard
- Customization available

## Class II Short Sleeve Standard Mesh Safety Shirt

M928Y  
M928R



One size (S-5XL) ..... \$12.70  
Add \$1.65/size for larger sizes.

- Durable high visibility shirt
- Yellow or orange mesh fabric
- Standard style with 2" silver reflective tape
- Printing available on front and back
- Meets ANSI/ISEA 107-2015, Type R, Class II standard
- Customization available

## Class III Hi-Vis Hooded Sweatshirts

OHS3  
GHS3



S-XL ..... \$26.25  
XL ..... \$31.20  
3XL ..... \$32.70  
4XL-5XL ..... \$33.30  
Add \$1.65/size for larger sizes.

- Durable high visibility 50% cotton and 50% polyester blend
- Yellow or orange high visibility fabric
- 2" silver reflective tape
- Lower outside pocket
- Meets ANSI/ISEA 107-2015, Type R, Class III standard
- Customization available

## Class II Hi-Vis Hooded Sweatshirts

OHS2  
GHS2



S-XL ..... \$24.15  
2XL ..... \$29.15  
3XL ..... \$30.60  
4XL-5XL.. \$31.15 Add \$1.65/size for larger sizes.

- Durable high visibility 50% cotton and 50% polyester blend
- Yellow or orange high visibility fabric
- 2" silver reflective tape
- Lower outside pocket
- Meets ANSI/ISEA 107-2015, Type R, Class II standard
- Customization available



## Unisex Inmate Top

PA1200



XS-XL .....\$13.80  
 2XL-4XL .....\$14.10  
 5XL-6XL .....\$14.60  
 Add \$1.65/size for larger sizes.

- Durable 65/35 poly cotton blend fabric, 7.5 oz (approx. weight)
- Hidden stitching to reduce intentional inmate damage
- Available in orange, khaki, red, green or yellow. Contrasting collar can be added for gender identification from a distance.
- Customization available
- Price includes single print

## Unisex Inmate Pants

PA1250



XS-L .....\$13.80  
 XL-2XL .....\$14.10  
 3XL-4XL .....\$14.60  
 5XL-6XL .....\$14.99  
 Add \$1.65/size for larger sizes.

- Durable 65/35 poly cotton blend fabric, 7.5 oz (approx. weight)
- Full elastic waist band
- Available in orange, khaki, red, green or yellow

## Inmate Apparel Size Chart

SIZE	CHEST/BUST	WAIST	HIPS
XS	34	23-27	31-34
S	38	28-30	36-38
M	42	31-34	39-41
L	46	35-38	42-44
XL	50	39-42	45-48
2XL	54	43-46	49-52
3XL	58	47-50	53-56
4XL	62	51-54	57-60
5XL	66	55-56	61-64

Inseams: Regular - 30" • Petite - 28" • Tall - 32"

## Stock Colors Additional colors available upon request.



Each color is a representation of a color standard and is subject to variation.



# Dell Reconnect

Technology recycling with Goodwill®

## Computer recycling has never been easier.

- Accepts any brand of used computer equipment in any condition.
- Guarantees your old electronics stay out of landfills.
- Creates green jobs in your community.
- It's free!

Recycle at your local Goodwill Industries of Kansas store today!



## Traffic Safety Flags

18"x18", 24" HANDLE • SF-1811  
24"x24", 36" HANDLE • SF-2411



Quantity	18"x18"	24"x24"
	24" handle	36" handle
1-100 .....	\$6.65.....	\$7.40
101-250 .....	\$6.35.....	\$6.90
251-500 .....	\$6.05.....	\$6.65

- Bright orange for high visibility and maximum safety
- Made from durable 100% polyester tricot fabric for all-season use
- Choose from 18"x18" mounted on a 24" long, 3/4" wooden dowel, or 24"x24" mounted on a 36" long, 3/4" wooden dowel
- Longer handles available upon request

## Wiping Materials

MIXED COLORS • MX110



Shipping available in select areas only  
Mixed Colors ..... \$28.45 / 40 lb bag



- Cut from recycled t-shirts, soft and durable
- Ideal multi-purpose wipes
- Available in 40 pound bags (approx. weight)
- Please allow 24 hours for processing and delivering/shipping order





# REAL JOBS

HELPING PEOPLE WITH DISABILITIES LIVE & WORK IN THE COMMUNITY

## ABOUT KETCH

The Kansas Elks Training Center for the Handicapped Inc. (KETCH) is a nonprofit organization dedicated to supporting adults with disabilities. Founded in 1962 by a group of parents advocating for their adult children with disabilities, KETCH has expanded its services to assist over 300 Kansans annually. Today, KETCH provides work, day and community living services, empowering adult Kansans with disabilities to lead fulfilling lives.

## PRODUCT GUARANTEE

KETCH products are guaranteed. If there is a factory error, KETCH will issue proper credit or replacement after receipt and inspection of goods. Freight will be paid by KETCH if a factory error was made.

## CUSTOMER SERVICE

Customer service hours are 8 a.m. to 4:30 p.m. CST, Monday through Friday. To speak to a representative please call 316.383.8770, email [custserv@ketch.org](mailto:custserv@ketch.org), or reach us via fax at 316.383.8779.

## HOW TO ORDER:

- 1 To place your order call us at 316-383-8770, send us a fax 316-383-8779 or email us at [custserv@ketch.org](mailto:custserv@ketch.org). Orders may be submitted by mail, e-mail or fax. Phone orders are welcome with a written purchase order to confirm order specifications. Please provide a tax exempt certificate if applicable
- 2 Invoices are issued with a net 30-day payment term payable by check, VISA, or MasterCard. Shipping and handling costs will be applied. If you would like to open an account, Call us at (316) 383-8770.
- 3 Enjoy your new air filter made with a purpose

## RETURNED GOODS

KETCH is not responsible for customer errors in the placement of orders. No return will be authorized after 30 days or on special orders. Any customer errors on custom orders will not be refunded. Any customer errors on standard size orders will incur a 20 % restocking charge. Freight must be pre-paid to Wichita, Kansas.





# ABREEZE

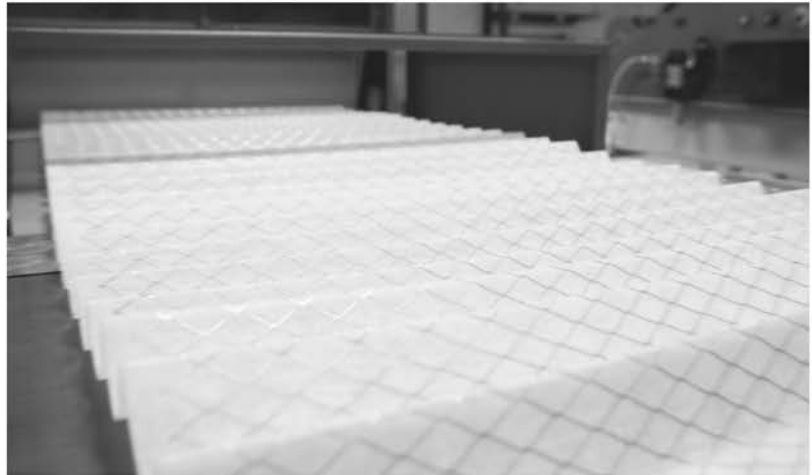
air filters



**KETCH** offers high performance standard and custom size air filters at competitive prices. Our filters are made of 100% recycled materials and have a high dust-holding capacity that effectively reduces greater than 90% of airborne allergens like pollen, mold spores, and dust mite debris. They also successfully reduce energy consumption and operation costs per square foot, and positively affect indoor air quality.



**Abreeze Air Filters** are available in polyester and MERV 8 pleated media that complies with ASHRAE Standard 52.1. The material used to manufacture the die-cut filter trays for standard sizes is pearl-coated beverage board and our custom size filter trays are hand assembled from pearl-coated chip board that is supported with beverage board. All filters are made ½-inch undersized in both width and length unless exact sizing is specified to allow for a better fit within HVAC systems. **All custom size filters will be made with exact measurements unless directed in writing to make them nominal.**



# ORDER NOW!

CALL US AT 316-383-8770, SEND US A FAX AT 316-383-8779,  
OR EMAIL US AT CUSTSERV@KETCH.ORG.

## MERV 8 STANDARD PLEATED AIR FILTERS

1"	Item #	Each	Minimum Quantity
10x10x1	411-0200	\$3.48	12
10x20x1	411-0206	\$3.73	12
12x20x1	411-0195	\$4.32	12
12x24x1	411-0207	\$4.13	12
14x20x1	411-0208	\$4.06	12
14x24x1	411-0182	\$4.61	12
14x25x1	411-0185	\$5.06	12
15x20x1	411-0209	\$4.04	12
16x20x1	411-0201	\$4.07	12
16x25x1	411-0202	\$4.64	12
18x18x1	411-0192	\$6.15	12
18x20x1	411-0189	\$5.62	12
18x24x1	411-0231	\$5.20	12
20x20x1	411-0203	\$4.84	12
20x24x1	411-0019	\$6.20	12
20x25x1	411-0204	\$6.10	12
20x30x1	411-0198	\$6.29	12
24x24x1	411-0205	\$6.56	12
25x25x1	411-0215	\$6.92	12

5"	Item #	Each	Minimum Quantity
20x25x5	411-0508	\$21.51	2

2"	Item #	Each	Minimum Quantity
12x24x2	411-0219	\$4.43	6
14x20x2	411-0232	\$4.80	6
16x20x2	411-0220	\$5.05	6
16x25x2	411-0221	\$5.63	6
18x18x2	411-0230	\$5.38	6
18x20x2	411-0233	\$5.38	6
18x24x2	411-0225	\$5.23	6
20x20x2	411-0222	\$5.38	6
20x24x2	411-0226	\$5.36	6
20x25x2	411-0223	\$6.23	6
24x24x2	411-0224	\$6.60	6
25x25x2	411-0227	\$7.04	6
20x30x2	411-0228	\$6.56	6

4"	Item #	Each	Minimum Quantity
12x24x4	411-0501	\$9.62	3
16x20x4	411-0502	\$8.99	3
16x25x4	411-0503	\$10.23	3
18x24x4	411-0504	\$10.50	3
20x20x4	411-0505	\$10.00	3
20x24x4	411-0509	\$11.10	3
20x25x4	411-0506	\$12.31	3
24x24x4	411-0507	\$11.99	3

## MERV 8 CUSTOM PLEATED AIR FILTERS UNDER 48" PLEASE ORDER IN EXACT MEASUREMENTS

1"	Item #	Each	Minimum Quantity
1-144 sq in x1"	410-0900	\$5.54	12
145-288 sq in x 1	410-0901	\$7.19	12
289-432 sq in x1	410-0902	\$7.48	12
433-576 sq in x1"	410-0903	\$7.92	12
577-775 sq in x 1"	410-0904	\$9.66	12
776-1000 sq in x 1	410-0905	\$11.50	12

2"	Item #	Each	Minimum Quantity
1-144 sq in x 2	410-0906	\$5.96	12
145-288 sq in x 2	410-0907	\$7.74	12
289-432 sq inc x 2"	410-0908	\$10.03	12
433-576 sq in x 2"	410-0909	\$12.23	12
577-775 sq in x 2"	410-0910	\$14.69	12
776-1000 sq in x 2"	410-0911	\$17.20	12

## MERV 8 CUSTOM PLEATED AIR FILTERS OVER 48" PLEASE ORDER IN EXACT MEASUREMENTS

1"	Item #	Each	Minimum Quantity
1-144 sq in x 1"	410-0912	\$7.22	12
145-288 sq in x 1"	410-0913	\$8.65	12
289-432 sq in x 1"	410-0914	\$10.65	12
433-576 aq in x 1"	410-0915	\$11.16	12
577-775 sq in x 1"	410-0916	\$12.15	12
776-1000 sq in x 1"	410-0917	\$13.87	12

2"	Item #	Each	Minimum Quantity
1-144 sq in x 2"	410-0918	\$7.46	12
145-288 sq in x 2"	410-0919	\$9.66	12
289-432 sq in x 2"	410-0920	\$12.54	12
433-576 sq in x 2"	410-0921	\$13.44	12
577-775 sq in x 2"	410-0922	\$16.31	12
776-1000 sq in x 2"	410-0923	\$17.97	12



# ORDER NOW!

CALL US AT 316-383-8770, SEND US A FAX AT 316-383-8779,  
OR EMAIL US AT CUSTSERV@KETCH.ORG.

## POLY STANDARD FILTERS

1"	Item #	Each	Minimum Quantity
10x10x1	411-0080	\$1.85	12
10x20x1	411-0086	\$2.69	12
12x20x1	411-0097	\$3.94	12
12x24x1	411-0087	\$2.53	12
14x20x1	411-0088	\$2.38	12
14x24x1	411-0098	\$4.74	12
14x25x1	411-0090	\$4.12	12
15x20x1	411-0089	\$2.40	12
16x20x1	411-0081	\$2.43	12
16x25x1	411-0082	\$2.69	12
18x18x1	411-0096	\$4.74	12
18x20x1	411-0099	\$4.74	12
18x24x1	411-0072	\$4.74	12
20x20x1	411-0083	\$2.65	12
20x25x1	411-0084	\$3.05	12
20x30x1	411-0079	\$3.14	12
24x24x1	411-0085	\$3.30	12
25x25x1	411-0095	\$3.34	12

2"	Item #	Each	Minimum Quantity
12x24x2	411-0119	\$2.04	6
14x20x2	411-0073	\$4.74	6
16x20x2	411-0120	\$2.95	6
16x25x2	411-0121	\$3.12	6
18x18x2	411-0071	\$4.74	6
18x20x2	411-0074	\$4.74	6
18x24x2	411-0122	\$2.85	6
20x20x2	411-0123	\$3.14	6
20x24x2	411-0126	\$3.22	6
20x25x2	411-0124	\$3.44	6
24x24x2	411-0125	\$3.74	6
25x25x2	411-0127	\$4.28	6
20x30x2	411-0128	\$3.84	6

## POLY CUSTOM FILTERS UNDER 48"

PLEASE ORDER IN EXACT MEASUREMENTS

1"	Item #	Each	Minimum Quantity
1-144 sq in x 1	410-0960	\$3.38	12
145-288 sq in x 1"	410-0961	\$4.05	12
289-432 sq in x 1"	410-0962	\$4.87	12
433-576 sq in x 1"	410-0963	\$5.28	12
577-775 sq in x 1"	410-0964	\$5.92	12
776-1000 sq in x 1"	410-0965	\$6.57	12

2"	Item #	Each	Minimum Quantity
1-144 sq in x 2"	410-0966	\$3.71	12
145-288 sq in x 2"	410-0967	\$4.60	12
289-432 sq in x 2"	410-0968	\$5.55	12
433-576 sq in x 2"	410-0969	\$6.28	12
577-775 sq in x 2"	410-0970	\$7.15	12
776-1000 sq in x 2"	410-0971	\$8.00	12

## POLY CUSTOM FILTERS OVER 48"

PLEASE ORDER IN EXACT MEASUREMENTS

1"	Item #	Each	Minimum Quantity
1-144 sq in x 1"	410-0972	\$6.26	12
145-288 sq in x 1"	410-0973	\$7.46	12
289-432 sq in x 1"	410-0974	\$9.12	12
433-576 sq in x 1"	410-0975	\$9.50	12
577-775 sq in x 1"	410-0976	\$10.49	12
776-1000 sq in x 1"	410-0977	\$11.75	12

2"	Item #	Each	Minimum Quantity
1-144 sq in x 2"	410-0978	\$6.85	12
145-288 sq in x 2"	410-0979	\$8.16	12
289-432 sq in x 2"	410-0980	\$10.42	12
433-576 sq in x 2"	410-0981	\$11.12	12
577-775 sq in x 2"	410-0982	\$12.44	12
776-1000 sq in x 2"	410-0983	\$14.11	12



# ENVISION<sup>®</sup>

2301 S. Water, Wichita, KS 67213

800-685-7959 | 316-267-2244

FAX 316-267-0559

[envisionus.com](http://envisionus.com) | [sales@envisionus.com](mailto:sales@envisionus.com)

F.E.I.N. 48-0543705



QUALITY PRODUCTS **COMPETITIVE PRICES**  
MADE IN AMERICA BY PEOPLE WHO ARE BLIND OR VISUALLY IMPAIRED

Envision: Customer Service 800-685-7959 · 316-267-0559 (fax) · [ksstateuse.org](http://ksstateuse.org)





## ORDERING OPTIONS

Available at: [ksstateuse.org](http://ksstateuse.org)

Or contact Envision Customer Service: [sales@envionus.com](mailto:sales@envionus.com)  
316-267-2244 • 800-685-7959 (toll free) • 316-267-0559 (fax)

Mail: 2301 S. Water St., Wichita, KS 67213

Also available at: [order.staplesadvantage.com](http://order.staplesadvantage.com)

Staples Advantage Customer Service:  
877-826-7755 (toll free) • 877-609-7770 (fax)

---

## CUSTOMER SERVICE

### TERMS & CONDITIONS

- INVOICES: Net 30 day terms
- CREDIT CARDS: MasterCard, Visa and American Express accepted
- LEAD TIMES: All stock items ship within 5 business days. Non-stock items will ship within 2-6 weeks, depending on product.
- FREIGHT: FOB destination
- RETURN POLICY: There will be a 20% restocking fee on any returned stock items. Authorized RMA required in advance. Freight charges for returns will be the responsibility of the customer. No returns allowed on special orders. No returns authorized after 30 days.

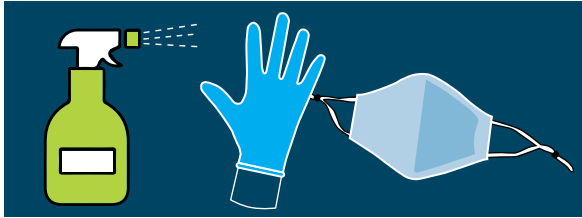
### SALES SUPPORT

- Contact Customer Service for samples, updated pricing and literature at [sales@envionus.com](mailto:sales@envionus.com).

# Our Capabilities

**Envision is your one-stop-shop for all of your requirements. We offer an extensive selection of products and services that you need and use every day!**

In addition to the items in this catalog, Envision is now approved as an optional source for your non-mandatory requirements. By sourcing your needs through the approved State Use vendors, you are able to eliminate the standard RFQ/RFB requirements, making for quick and easy purchases, while also supporting our agencies!



## **PPE SUPPLIES**

*sanitizer, wipes, gloves and masks*  
*Contract #49155*



## **OFFICE SUPPLIES**

*copy paper and pens*



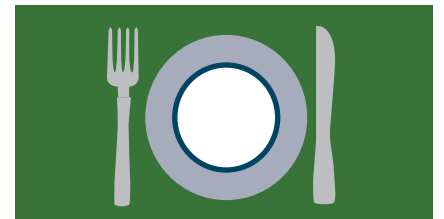
## **JANITORIAL SUPPLIES**

*trash bags and trash cans*



## **CLEANING SUPPLIES**

*wipes, disinfectants and towels*



## **FOOD SERVICE SUPPLIES**

*cafeteria trays, utensils and gloves*



## **TECHNOLOGY SUPPLIES**

*CAT6 cables and electronic accessories*



## **SMALL ASSEMBLY, KITTING PROJECTS**

*Contact us to discuss your needs*



## **PACKING/SHIPPING**

*reboxing, repackaging, labeling and order fulfillment*

Your purchases help support the mission of Envision to provide employment opportunities for people who are blind or visually impaired right here in Kansas. You are also helping Envision's PRIDE adult day program to give meaningful work opportunities for individuals who are legally blind as well as intellectually and developmentally disabled.

# Puncture & Tear Resistant Can Liners

## Linear Low Density Can Liners - *A great application for sharp and jagged objects*

Made for durability and dependability, our star seal linear low density (LLDPE) "flat-pack" can liners are designed for multi-purpose workloads that are ideal when puncture and tear resistance is needed. Made with a minimum of 10% post-consumer recycled material (PCR).

Capacity (Gallons)	Part #	Size	Gauge (Mil)	Strength	Color	Quantity Per Case	Price
7-10	GPBF-2424	24" x 24"	0.80	Heavy	Clear	100	\$7.09
7-10	LD710L	24" x 23"	0.35	Regular	Clear	500	\$20.30
12-16	LD1216L	24" x 32"	0.35	Regular	Clear	500	\$24.50
12-16	LD1216XH	24" x 33"	1.00	Heavy	Clear	250	\$21.40
20-30	LD2030H	30" x 36"	0.65	Medium	Clear	250	\$22.00
33	LD33H	33" x 39"	0.80	Heavy	Clear	250	\$26.30
33	LD33XH	33" x 39"	1.30	X-Heavy	Clear	100	\$21.11
33	LD33XH-B	33" x 39"	1.30	X-Heavy	Blue	100	\$20.99
40-45	LD4045M	40" x 46"	0.60	Medium	Clear	250	\$33.90
40-45	LD4045H	40" x 46"	0.80	Heavy	Clear	125	\$19.65
60	LD5560M	38" x 58"	0.80	Heavy	Clear	100	\$19.65
60	LD5560H	38" x 58"	1.00	Heavy	Clear	100	\$23.85
60	LD5560XH	38" x 58"	1.50	XX-Heavy	Clear	100	\$32.39

Other sizes and colors available upon request



**100% Recyclable**

*Made with pride by Kansans who are blind or low vision.*

# Soft Refuse Can Liners

## High Density Can Liners - Great for office, kitchen and bathroom applications

Our high density (HDPE) "flat-pack" can liners deliver superior performance for office, kitchen or bathroom applications while using less plastic than traditional can liners, making these liners a dependable and economical choice. Made with a minimum of 10% post-consumer recycled material (PCR).

Capacity (Gallons)	Part #	Size	Gauge (Microns)	Strength	Color	Quantity Per Case	Price
7-10	HD710L	24" x 24"	8	Regular	Natural	1,000	\$28.40
12-16	HD1216L	24" x 33"	8	Regular	Natural	1,000	\$33.96
20-30	HD2030M	30" x 37"	10	Medium	Natural	500	\$28.92
33	HD33M	33" x 40"	9	Medium	Natural	250	\$15.55
33	HD33H	33" x 40"	12	Heavy	Natural	250	\$20.85
40-45	HD4045M	40" x 48"	10	Medium	Natural	250	\$24.05
40-45	HD4045H	40" x 48"	12	Heavy	Natural	250	\$27.45
60	HD5560H	38" x 60"	14	Heavy	Natural	200	\$29.98

Other sizes and colors available upon request



*Not suitable for sharp or jagged objects*



**100% Recyclable**

*Made with pride by Kansans who are blind or low vision.*



# Coreless Roll Can Liners

## Coreless Roll Can Liners - *Convenient, user-friendly rolls*

Our coreless roll can liners combine high-quality with the convenience of an easy-to-dispense individual roll. Coreless roll can liners save you storage space. These are available in either puncture resistant (LLDPE) or soft refuse (HDPE) applications. Made with a minimum of 10% post-consumer recycled material (PCR).

### Puncture and Tear Resistant - *Linear Low Density (LLDPE)*

Capacity (Gallons)	Part #	Size	Gauge (Mil)	Strength	Color	Quantity Per Case	Price
12-16	L-243310-C	24" x 33"	1.00	Heavy	Clear	250 bags (10 rolls of 25)	\$26.80
20-30	L-303608-K	30" x 36"	0.70	Medium	Gray	250 bags (10 rolls of 25)	\$25.40
33	L-333908-K	33" x 39"	0.70	Medium	Gray	250 bags (10 rolls of 25)	\$28.45
40-45	L-404610-K	40" x 46"	1.00	Heavy	Gray	100 bags (10 rolls of 10)	\$21.80
57	L-365808-K	36" x 58"	0.70	Medium	Gray	100 bags (10 rolls of 10)	\$18.65
60	L-385808-K	38" x 58"	0.70	Medium	Gray	100 bags (10 rolls of 10)	\$18.95
60	L-385810-K	38" x 58"	1.00	Heavy	Gray	100 bags (10 rolls of 10)	\$26.99

### Soft Refuse - *High Density (HDPE) Not suitable for sharp or jagged objects*

Capacity (Gallons)	Part #	Size	Gauge (Microns)	Strength	Color	Quantity Per Case	Price
7-10	H-24246-C	24" x 24"	8	Regular	Natural	1000 bags (20 rolls of 50)	\$31.10
12-16	H-24336-C	24" x 33"	8	Regular	Natural	1000 bags (20 rolls of 50)	\$37.05
20-30	H-303710-C	30" x 37"	10	Medium	Natural	500 bags (20 rolls of 25)	\$31.60
33	H-334012-C	33" x 40"	12	Heavy	Natural	250 bags (10 rolls of 25)	\$21.10
40-45	H-404813-C	40" x 48"	12	Heavy	Natural	250 bags (10 rolls of 25)	\$29.20
40-45	H-404816-C	40" x 48"	16	X-Heavy	Natural	250 bags (10 rolls of 25)	\$37.05
56	H-434816-C	43" x 48"	16	X-Heavy	Natural	200 bags (10 rolls of 20)	\$32.80

Other sizes and colors available upon request



**100% Recyclable**

*Made with pride by Kansans who are blind or low vision.*





# Environmentally Friendly Can Liners



## Total Recycled Content Bags - Puncture and tear resistant

Made with 100% recycled LLDPE material, our Total Recycled Content (TRC) bags minimize the input of plastic and resins into our waste system while providing reliable strength and durability for heavy workloads. Made with a minimum of 30% post-consumer recycled material (PCR).

Capacity (Gallons)	Part #	Size	Gauge (Mil)	Strength	Color	Quantity Per Case Rolls	Price
30-35	RC-3344-C	33" x 44"	1.50	XX-Heavy	Clear	100 bags (10 rolls of 10)	\$25.95
40-45	RC-4048-C	40" x 48"	1.50	XX-Heavy	Clear	100 bags (10 rolls of 10)	\$33.05
56	RC-4348-C	43" x 48"	1.50	XX-Heavy	Clear	100 bags (10 rolls of 10)	\$38.06

Capacity (Gallons)	Part #	Size	Gauge (Mil)	Strength	Color	Quantity Per Case Flat Packs	Price
7-10	TRC-2424	24" x 24"	1.00	Heavy	Brown/Black	250 bags	\$17.22
12-16	TB-2432	24" x 32"	1.00	Heavy	Brown/Black	250 bags	\$20.35
20-30	TRC-3039	30" x 39"	1.30	X-Heavy	Brown/Black	100 bags	\$15.72
33	TRC-H-3340BK	33" x 40"	1.50	XX-Heavy	Brown/Black	100 bags	\$19.95
40-45	TB-231743	40" x 43"	2.00	Super Heavy	Brown/Black	100 bags	\$31.30
40-45	TB-231746	40" x 46"	2.00	Super Heavy	Brown/Black	100 bags	\$33.70
40-45	TRC-4048	40" x 48"	1.50	XX-Heavy	Brown/Black	100 bags	\$32.79
56	TRC-4349	43" x 49"	1.50	XX-Heavy	Brown/Black	100 bags	\$31.10
57	TRC-3658	36" x 58"	1.50	XX-Heavy	Brown/Black	100 bags	\$38.55
60	TRC-3860	38" x 60"	1.50	XX-Heavy	Brown/Black	100 bags	\$41.94
65	TRC-5051	50" x 51"	1.50	XX-Heavy	Brown/Black	100 bags	\$46.67



100% Recyclable

Made with pride by Kansans who are blind or low vision.

# Environmentally Friendly Can Liners



## ASTM 6400 Compostable Bags

ASTM 6400 Compostable bags are engineered for the collection and composting of organic waste in commercial composting facilities\*.

These Compostable bags are third-party certified by the US Composting Council (USCC) and the Biodegradable Products Institute (BPI) to meet the stringent testing requirements of ASTM D6400, to compost quickly and safely in modern shorter term compost facilities.

\*Requires sufficient moisture, oxygen and microbial activity.  
Be aware: there may not be a commercial composting facility in your area.

Capacity (Gallons)	Part #	Size	Gauge (Mil)	Strength	Color	Quantity Per Case	Price
13	ASTM-1545	24" x 30"	0.85	Heavy	Green	45	\$14.55
20-30	ASTM-1546	30" x 39"	1.10	X-Heavy	Green	48	\$29.05
30-35	ASTM-1544	33" x 48"	0.85	Heavy	Green	50	\$31.15
48	ASTM-1548	42" x 48"	0.85	Heavy	Green	40	\$30.20
64	ASTM-1547	48" x 60"	0.85	Heavy	Green	30	\$33.05



100% Recyclable

Made with pride by Kansans who are blind or low vision.

Envision: Customer Service 800-685-7959 · 316-267-0559 (fax) · [ksstateuse.org](http://ksstateuse.org)

# Specialty Bags

## Insect Repellent Trash Bags - *The solution for keeping bugs away from the trash*

Puncture and tear resistant, an environmentally sound solution for the prevention of insects and pests invading garbage bag handling and disposal. Our insect repellent trash bags are a recycled linear low density product containing **non-toxic and non-DEET** natural fragrance oils. There are **no insecticides** contained in these innovative trash bags making them **safe for food handling establishments**. Made with a minimum of 30% post-consumer recycled material (PCR).



Capacity (Gallons)	Part #	Size	Gauge (Mil)	Strength	Color	Quantity Per Case	Price
33	IBF-3020C	33" x 40"	2.00	Super Heavy	Clear	90	\$27.73
33	IBF-3020K	33" x 40"	2.00	Super Heavy	Black	90	\$26.05
35	IBF-3520C	33" x 45"	2.00	Super Heavy	Clear	80	\$27.73
35	IBF-3520K	33" x 45"	2.00	Super Heavy	Black	80	\$26.05
45	IBF-4520C	40" x 45"	2.00	Super Heavy	Clear	65	\$27.73
45	IBF-4520K	40" x 45"	2.00	Super Heavy	Black	65	\$26.05
55	IBF-5520C	37" x 52"	2.00	Super Heavy	Clear	65	\$27.73
55	IBF-5520K	37" x 52"	2.00	Super Heavy	Black	65	\$26.05

## SecureFit™ Shredder Bags *Specifically designed for office shredders*

- Ensures secure disposal (transparent)
- Reliable and convenient machine fit
- Puncture and tear resistant



Capacity (Gallons)	Part #	Size	Gauge (Mil)	Strength	Color	Quantity Per Case	Price
10	SBC-4975	24" x 26"	0.60	Medium	Clear	100 bags (2 rolls of 50)	\$11.82
20	SBC-4791	29" x 30"	0.70	Medium	Clear	100 bags (2 rolls of 50)	\$10.52
26	SBC-4792	31" x 36"	0.70	Medium	Clear	50 bags (1 roll of 50)	\$10.27
39	SBC-4793	36" x 39"	0.70	Medium	Clear	50 bags (1 roll of 50)	\$11.80
45	SBC-4974	44" x 39"	0.75	Medium	Clear	50 bags (1 roll of 50)	\$20.08
50	SBC-4976	39" x 51"	0.75	Medium	Clear	50 bags (2 rolls of 25)	\$18.18
60	SBC-4982	49" x 51"	0.75	Medium	Clear	50 bags (2 rolls of 25)	\$20.42


 100% Recyclable • *Made with pride by Kansans who are blind or low vision.*

# Medical Bags

## Medical Isolation Bags - Puncture and tear resistant

Designed for heavy-duty infectious waste, infectious linen and non-contagious linen management, our linear low density isolation bags feature dependable tear and puncture resistance, which is ideal for hospitals, doctor's offices, dental clinics and nursing home waste management programs. Imprinted in English and Spanish to help ensure safety and proper use. **Meets DOT requirements 49 CFR Section 173.197 (10 gallon to 40-45 gallon bags)**



 100% Recyclable

Made with pride by Kansans who are blind or low vision.



### Infectious Waste Collection

Capacity (Gallons)	Part #	Size	Gauge (Mil)	Strength	Color	Quantity Per Case	Price
7-10	ISR-10-M	24" x 24"	1.20	X-Heavy	Red	250	\$25.60
32-33	ISR-RACK-H	30.5" x 43"	1.20	X-Heavy	Red	100	\$20.95
32-33	ISR-RACK-XH	30.5" x 43"	3.00	Super Heavy	Red	50	\$28.00
33	ISR-33-H	33" x 40"	1.20	X-Heavy	Red	100	\$21.65
40-45	ISR-4045-H	40" x 47"	1.20	X-Heavy	Red	100	\$30.55
50-55	ISR-5055-XH	37" x 50"	3.00	Super Heavy	Red	25	\$19.20

### Infectious Linen Collection

Capacity (Gallons)	Part #	Size	Gauge (Mil)	Strength	Color	Quantity Per Case	Price
32-33	ISY-RACK-H	30.5" x 43"	1.20	X-Heavy	Yellow	100	\$20.95

### Non-Contagious Linen Collection - Unprinted

Capacity (Gallons)	Part #	Size	Gauge (Mil)	Strength	Color	Quantity Per Case	Price
32-33	ISB-RACK-H	30.5" x 43"	1.20	X-Heavy	Blue	100	\$20.95



# Seal Closure Bags & Body Fluid Clean Up Kit

## Seal Closure Bags - To protect, organize and sort your valuables and multiple items

These reusable, resealable zipper storage bags provide an easy solution for your items, keeping them dry, organized and secure. Our seal closure bags are manufactured to the commercial specifications determined by the Federal government.

*Product is not intended to hold liquid or for food storage.*



**Preserves and Protects!**

Part #	Size	Gauge (Mil)	Color	Quantity Per Case	Price
ZF-001	4" x 4"	2.00	Clear	1,000	\$25.20
ZF-002	6" x 6"	2.00	Clear	1,000	\$34.45
ZF-003	8" x 8"	2.00	Clear	1,000	\$49.85
ZF-007	10" x 10"	2.00	Clear	500	\$36.76
ZF-008	12" x 12"	2.00	Clear	500	\$43.76

## Body Fluid Clean Up Kit - Safe and simple emergency exposure control

This kit is used to clean up various body fluid spills. Ideal for use in schools, hospitals, offices, buses or anywhere body fluid spills and splatters may occur.

The kit helps meet OSHA standards for blood-borne pathogen exposure control.

Kit includes gloves, absorbent powder, scoop/sweep, germicidal wipe, 2 wiping towels, antimicrobial hand wipe, biohazard bag and instruction sheet.



Part #	Description	Quantity Per Case	Price/cs
ENV-BFCUK	Body Fluid Clean Up Kit	25 kits	\$125.00

 100% Recyclable • Made with pride by Kansans who are blind or low vision.

**Envision: Customer Service 800-685-7959 · 316-267-0559 (fax) · [ksstateuse.org](http://ksstateuse.org)**

# Feminine Hygiene Disposal



## TidyGirl™ Feminine Hygiene Disposal System

TidyGirl™ is the answer to maintaining clean and sanitary conditions in female restrooms. Save time and keep bathroom stalls fresh. These convenient, user-friendly plastic bags encourage proper sanitary disposal of all feminine hygiene products, diapers and wipes.

### FEATURES

- High-impact, durable dispenser
- Lockable lid provides security
- Easy-to-fill dispenser
- Smooth surface - easy cleaning
- Easy installation of dispenser

### BENEFITS

- Antimicrobial additive
- Prevents cross-contamination
- Odor control
- Convenient, coreless rolls
- Tear and puncture resistant
- 30% recycled content



Dispenser Part #TGUD-P-V2



Bag Part #TGUF

Part #	Description	Color	Quantity Per Case	Price/cs
TGUF	7.25" x 14", 1.2 mil Low Density Bag	Pink	600 (4 rolls of 150)	\$26.27
TGUD-P-V2	Plastic Dispenser for TidyGirl™ Bags	Silver	1	N/C

# Hand Trucks

## Hand Trucks - Designed to work for the long haul

Moving valuable products safely and efficiently to their intended destinations can mean the difference between getting a job done and having costly delays. These heavy-duty steel hand trucks are an essential piece of equipment for facilities management, maintenance shops and shipping/logistics operations. Envision hand trucks can be relied upon to handle the heaviest loads and last for years.

Part #	Type	Frame Height	Load Capacity	Price
ENV-CFH600-HT	Continuous Flow Handle	48 in.	600 lbs.	\$94.15
ENV-TH600-HT	Twin Handle	46 in.	600 lbs.	\$108.60
ENV-ECON300-HT	Economy	40 in.	300 lbs.	\$61.85
ENV-DH800-HT	D-Handle	48 in.	600 lbs.	\$101.25
ENV-CONV600-HT	Convertible	48 in.	700 lbs.*	\$130.60

\*Convertible Hand Truck has a 700 lbs. vertical load capacity and a 600 lbs. horizontal load capacity.



**Continuous Flow Handle**



**Twin Handle**



**Economy**



**D-Handle**



**Convertible**

# Hygiene Solutions

## GOJO® Green Hygiene™ Solutions

Through GOJO® Green Hygiene™ Solutions, you'll discover the world's first portfolio of green-certified, high-performing restroom soaps and sanitizers. It's a complete program that supports your green cleaning efforts and commitment to sustainability with features you'd expect from the industry leader.



## ADX-12 - Manual Pump Dispensers, Soap & Hand Sanitizer Refills

Part #	Description	Size	Units Per Case	Price Per Case
ENV-GJ8884-06	GOJO® ADX-12 Manual Grey Soap Dispenser	1250 mL	6	No Charge
ENV-GJ8811-03	GOJO® Unscented Clear & Mild Foam Handwash, ADX-12 Refill	1250 mL	3	\$44.25
ENV-GJ8813-03	GOJO® Citrus Ginger Foam Hand & Shower Wash, ADX-12 Refill	1250 mL	3	\$44.25
ENV-GJ8820-06	PURELL® ADX-12 Manual Hand Sanitizer White Dispenser	1200 mL	6	No Charge
ENV-GJ8803-03	PURELL® Advanced Green Certified Instant Hand Sanitizer Gel, ADX-12 Refill	1200 mL	3	\$46.00
ENV-GJ8804-03	PURELL® Advanced Green Certified Instant Hand Sanitizer Foam, ADX-12 Refill	1200 mL	3	\$60.60

## LTX-12 - Touchless Dispensers, Soap & Hand Sanitizer Refills

Part #	Description	Size	Units Per Case	Price Per Case
ENV-GJ1984-04	GOJO® LTX-12 Touchless Grey Soap Dispenser	1200 mL	4	No Charge
ENV-GJ1911-02	GOJO® Unscented Clear & Mild Foam Handwash, LTX-12 Refill	1200 mL	2	\$44.25
ENV-GJ1944-02	GOJO® Provon Floral Antibacterial Foaming Handwash Soap, LTX-12 Refill	1200 mL	2	\$44.25
ENV-GJ1947-02	GOJO® Plum Antibacterial Foaming Handwash Soap, LTX-12 Refill	1200 mL	2	\$49.80
ENV-GJ1916-02	GOJO® Pomeberry Foam Handwash, LTX-12 Refill	1200 mL	2	\$44.25
ENV-GJ1920-04	PURELL® LTX-12 Touchless White Hand Sanitizer Dispenser	1200 mL	4	No Charge
ENV-GJ1904-02	PURELL® Advanced Green Certified Instant Hand Sanitizer Foam, LTX-12 Refill	1200 mL	2	\$65.20

## Purell® Hand Sanitizer

Part #	Description	Size	Units Per Case	Price Per Case
ENV-GJ3900-36	PURELL® Instant Hand Sanitizer Gel In Jelly Wrap Carrier	1 Oz	36	\$56.35



# Writing Tools

## Dry Erase Markers

Our premium dry erase markers are perfect for writing or drawing on white boards, glass, and other non-porous surfaces. The low-odor, non-toxic ink is quick drying and wipes off easily with an eraser or dry cloth. The cap has an ergonomically safe design.

Part #	Description	Color	Price per Pack
DE-4AST	Dry Erase Tube Marker with Chisel Tip, 4 pack - Black, Green, Red, Blue	Assorted	\$3.55
DE-6BLK	Dry Erase Tube Marker with Chisel Tip, 6 pack	Black	\$4.85
DE-6BLUE	Dry Erase Tube Marker with Chisel Tip, 6 pack	Blue	\$4.85
DE-6RED	Dry Erase Tube Marker with Chisel Tip, 6 pack	Red	\$4.85



## Highlighter Markers

These vibrant highlighters will give a brilliant accent to important text with quick drying ink. The low-odor, non-toxic ink ensures that any highlighted text remains visible. The cap has an ergonomically safe design.

Part #	Description	Color	Price per Pack
HL-4AST	Highlighter Tube Marker with Chisel Tip, 4 pack - Yellow, Green, Orange, Pink	Assorted	\$3.55
HL-6YLW	Highlighter Tube Marker with Chisel Tip, 6 pack	Yellow	\$4.85
HL-6PINK	Highlighter Tube Marker with Chisel Tip, 6 pack	Pink	\$4.85
HL-6ORG	Highlighter Tube Marker with Chisel Tip, 6 pack	Orange	\$4.85



## Permanent Markers

Our all-purpose permanent markers are made to write smoothly and boldly on both porous and non-porous surfaces with quick drying, waterproof ink that is low-odor and non-toxic. The cap has an ergonomically safe design.

Part #	Description	Color	Price per Pack
PM-4AST	Permanent Tube Marker with Chisel Tip, 4 pack - 2 Black, 1 Red, 1 Blue	Assorted	\$3.55
PM-6BLK	Permanent Tube Marker with Chisel Tip, 6 pack	Black	\$4.85
PM-6BLUE	Permanent Tube Marker with Chisel Tip, 6 pack	Blue	\$4.85
PM-6RED	Permanent Tube Marker with Chisel Tip, 6 pack	Red	\$4.85



# Writing Tools



## Alpha Elite Gel Pens

Alpha Elite gel ink pens have a wide barrel and a ridged cushion grip. Water-based gel formula glides effortlessly across the paper. Rich vibrant colors and medium point.

Part #	Description	Color	Price per Dozen
GP-111	Gel Pen with Cushion Grip	Red	\$10.80
GP-222	Gel Pen with Cushion Grip	Black	\$10.80
GP-333	Gel Pen with Cushion Grip	Blue	\$10.80



## Softgrip Stick Pens

The rubberized barrel on these Softgrip pens provide extra writing comfort and require less holding pressure. The ringed grip area is easy to handle and less likely to slip. Made of high-quality tungsten-carbide, the ball tip reduces skips and provides a long lasting write-out. Available in medium and fine point.

Part #	Description	Point	Color	Price per Dozen
SF-222	Softgrip Stick Pen	Fine	Black	\$8.75
SF-333	Softgrip Stick Pen	Fine	Blue	\$8.75
SM-111	Softgrip Stick Pen	Medium	Red	\$8.75
SM-222	Softgrip Stick Pen	Medium	Black	\$8.75
SM-333	Softgrip Stick Pen	Medium	Blue	\$8.75



## Retractable Gel Pens

Gel ink roller pens for general office use, available in red, blue and black. Pen tip retracts with a click. Soft comfort grip. Clip color and grip match ink color.

Part #	Description	Color	Price per Dozen
RGP-111	Retractable Gel Pen with Cushion Grip	Red	\$13.38
RGP-222	Retractable Gel Pen with Cushion Grip	Black	\$13.38
RGP-333	Retractable Gel Pen with Cushion Grip	Blue	\$13.38

# Writing Tools



## Vista Retractable Ballpoint Pen

Transparent barrel allows easy monitoring of ink level. Durable pocket clip matches ink color. State-of-the-art retractor smoothly extends writing tip. Available in medium and fine point in blue and black.

Part #	Description	Point	Color	Price per Dozen
VBF-222-N	Retractable Ballpoint Pen	Fine	Black	\$7.98
VBF-333-N	Retractable Ballpoint Pen	Fine	Blue	\$7.98
VBM-222-N	Retractable Ballpoint Pen	Medium	Black	\$7.98
VBM-333-N	Retractable Ballpoint Pen	Medium	Blue	\$7.98



## Free Ink Rollerball

The Free Ink rollerball pen uses a smooth writing metal ball. It is made of lightweight plastic, with window-to-view ink level. The ink color is indicated on both ends of the pen. Permanent non-fading ink.

Part #	Description	Point	Color	Price per Dozen
FRF-111	Free Ink Rollerball Pen	0.5 mm	Red	\$17.85
FRF-222	Free Ink Rollerball Pen	0.5 mm	Black	\$17.85
FRF-333	Free Ink Rollerball Pen	0.5 mm	Blue	\$17.85
FRM-111	Free Ink Rollerball Pen	0.7 mm	Red	\$17.85
FRM-222	Free Ink Rollerball Pen	0.7 mm	Black	\$17.85
FRM-333	Free Ink Rollerball Pen	0.7 mm	Blue	\$17.85

*Assembled by employees of Envision's PRIDE day support program.*



# Envision Printing Solutions



## Guaranteed Fast Turnaround!

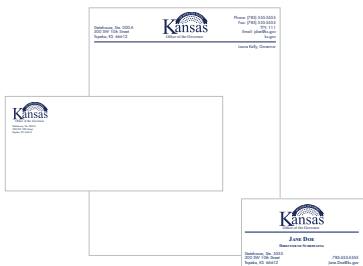
To order printing, visit: [envisionprint.myprintdesk.net](http://envisionprint.myprintdesk.net) then click on the **State of Kansas** link at the top of the page.

Envelope sizes	#9 & #10	6 x 9 Catalog	9 x 12 Catalog	10 x 13 Catalog
One color - 500 qty	\$82.50	\$135.00	\$138.00	\$145.00
Two color - 500 qty	\$117.50	\$170.00	\$173.00	\$180.00
One color - 1,000 qty	\$103.50	\$202.50	\$207.00	\$217.50
Two color - 1,000 qty	\$173.75	\$252.00	\$257.00	\$267.50

Letterhead: 60# text paper	One Color	Two Color
500 qty	\$80.00	\$115.00
1,000 qty	\$100.00	\$140.00
2,000 qty	\$123.00	\$178.00
5,000 qty	\$195.00	\$270.00
10,000 qty	\$312.00	\$437.00

Business Cards: One side only, 250 Qty, 120 lb. Paper	Price
One color ink	\$14.50
Multi-color ink	\$17.50

Business Cards: Two sides, 250 Qty, 120 lb. Paper	Price
One color ink	\$16.50
Multi-color ink	\$19.50



877-229-8466  
316-440-0427 (fax)

To order: [envisionprint.myprintdesk.net](http://envisionprint.myprintdesk.net)

Email: [printsales@envisionus.com](mailto:printsales@envisionus.com)

*Made with pride by Kansans who are blind or low vision.*

Envision Print: 877-229-8466 · [printsales@envisionus.com](mailto:printsales@envisionus.com)

## Accessibility Consulting and Digital ADA Compliance

Are you meeting federal requirements for digital accessibility? Ensure your website, documents, and software are ADA compliant.

### Compliances and consulting services for digital accessibility needs:

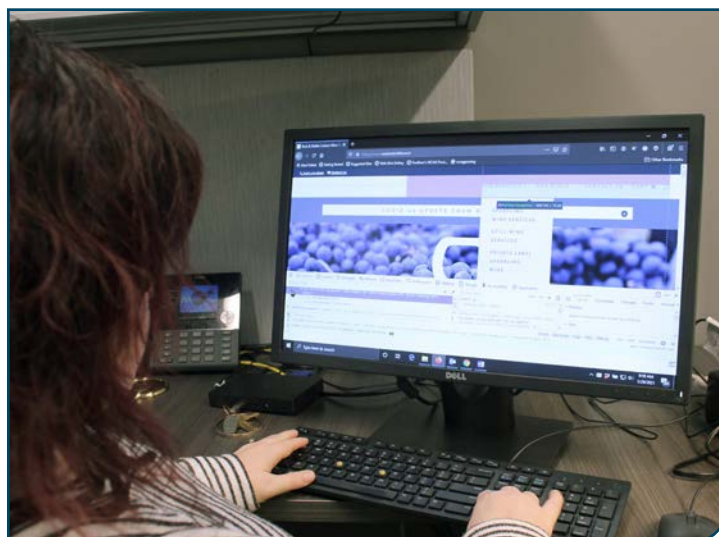
- Websites
- Documents
- Software
- Applications
- VPATs

### Training available:

- Workplace Accessibility
- Accessible Events/Conferences
- Printed Media
- Multi-Media
- PDF Accessibility

## CERTIFICATIONS and STANDARDS

- Approved Government Publishing Office (GPO) Contractor
- Certified Professional in Accessibility Core Competencies (CPACC)
- Web Content Accessibility Guidelines (WCAG)
- Section 508 standards and universal design principles
- Department of Homeland Security (DHS) Trusted Tester
- Web Accessibility Specialist (WAS)
- Certified Assistive Technology Instructional Specialist (CATIS)
- Job Access with Speech (JAWS) screen reader certification



### Why is digital accessibility important?

- Automated tests only detect 25-40% of accessibility issues
- 97.8% of website home pages have detectable WCAG failures
- 61 million people, or 1-4 adults, have a disability in the United States
- Widgets and overlays may create interface issues with assistive technology
- Non-compliance can mean legal risk for accessibility lawsuits



For more information contact  
Emily Hurst, V.P., Workforce Innovation Center | [wic@envisionus.com](mailto:wic@envisionus.com)  
[workforceforall.com](http://workforceforall.com)



**Envision Interface provides high-quality contact service, while making an impact on the community by employing people who are blind or visually impaired.**

Envision Interface has a physical location in Wichita, Kansas, but also operates remotely. Our staff consists of individuals who are blind, visually impaired and sighted, and all have an unmatched dedication to their jobs and a drive to get real results. When you do business with us, you are not only maximizing your sales and customer service efforts, but you are also making it possible for adults with visual impairments to build life-changing, rewarding careers in professional positions while contributing to their communities.

### **Why Outsource to Envision Interface?**

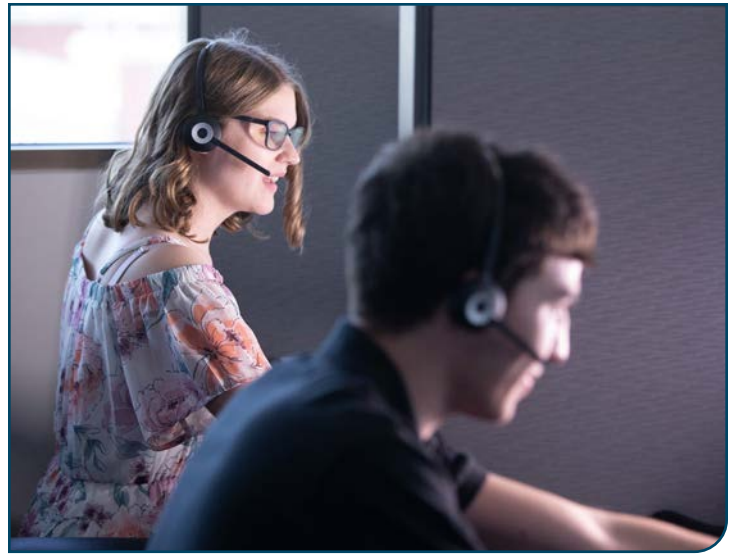
Are you experiencing high turnover or difficulty in even finding qualified employees?

- Envision Interface has a large pool of employees who can demonstrate excellent customer service and results.
- We offer regular reporting on KPI's, full CSR and training programs, and competitive pricing.

### **Are the rising costs of overhead, insurance and operating expenses causing you to lose revenue and efficiency?**

Outsourcing to Envision Interface is your solution. We cover all operational costs while you reap the rewards of proven call center professionals.

**Call us today to see how our contact center can meet your needs.**



### **Envision Interface offers:**

- KPI reporting
- Rapid on boarding
- Bilingual call center representatives (English and Spanish)
- Trained and dedicated staff with extremely low turnover
- Life-changing jobs for the BVI community

**Heather Moore, Director of Call Center Services**

**316-440-1513 or [interface@envisionus.com](mailto:interface@envisionus.com)**

# OUR POLICY

We place strong emphasis on the quality and reliability of our products and services. Our products and services are guaranteed to give satisfaction.

If there is a factory error, the qualified vendor will issue proper credit or replacement after receipt and inspection of goods. Freight will be paid by the qualified vendor if a factory error was made. Feel free to write or call with any comment. You will receive fast, personal attention. We want you to be as pleased as we are with the efforts of our facilities.

[www.KSstateuse.org](http://www.KSstateuse.org)



# KANSAS STATE USE

PRODUCTS AND SERVICES CATALOG

## 2024-2025



Thank You for Your Support

When you purchase products and services from the companies listed in the State of Kansas Products and Services Catalog, you make a difference in the lives of Kansans who are blind and severely disabled.

## [KSSTATEUSE.ORG](https://ksstateuse.org)

**SUPPORT THESE FINE BUSINESSES**

CPRF • BTCO • KETCH • GOODWILL INDUSTRIES OF KANSAS, INC.  
ENVISION • ENVISION PRINT • ENVISION INTERFACE  
ENVISION BVI WORKFORCE INNOVATION CENTER  
TARC • COTTONWOOD